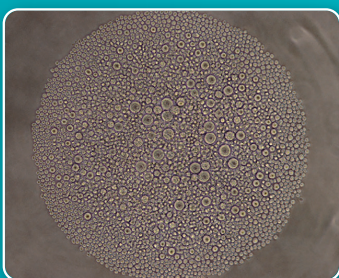


HemExTM-TypeH

Human HSC expansion basal medium

*Requires the addition of chemically synthesized agonists, etc.



- ❑ Specially designed for human HSC.
- ❑ Confirmed the proliferation of human HSPC.
- ❑ Supervised by Professor Satoshi Yamazaki.

Human HSC expansion basal medium

HemEx[®]-TypeH *Requires the addition of chemically synthesized agonists, etc.

- HemEx-TypeH is optimized for expansion of human HSC.
- This product developed by Dr. Yamazaki is manufactured with strict quality control in CSTI.
- For information on obtaining Butyzamide, a chemically synthesized agonist to be added, please contact Celaid Therapeutics Inc. (contact@celaidtx.com)
- It is necessary to add L-glutamine at a concentration of 4mM.



Human HSCs expansion after 10 days in culture

Fig.1 Number of cells

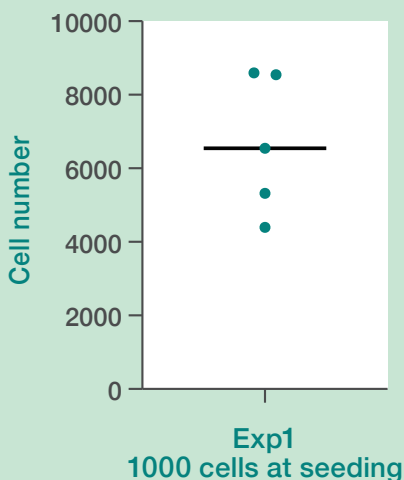
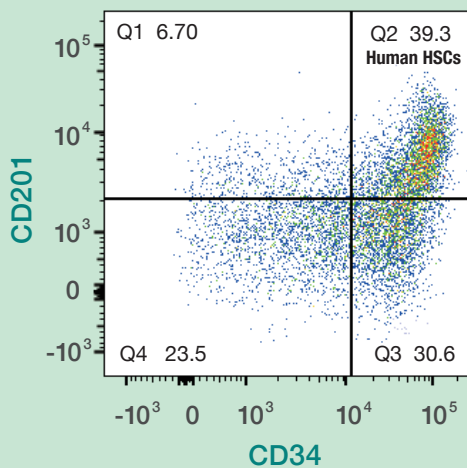


Fig.2 An example flow cytometry plot displaying human HSC



Code (CSTI / NIPRO)	Product Name	Description	Volume
A2D10P01C / 87-079	HemEx-TypeH	Human HSC basal medium	100mL (P)
Supplement			
Code (CSTI / NIPRO)	Product Name	Description	Volume
1104 / 87-885	200mM L-Glutamine solution	200mM L-Glutamine solution	100mL (P)

(P) PET bottle

※ For Research use only.



1-16-16 Seikaen, Aoba-ku, Sendai, 982-0262, Japan

URL: <http://www.cstimedia.com>
E-mail: csti-info@ml.nipro.co.jp



NIPRO CORPORATION
3-26, Senriokashinmachi, Settsu, Osaka, 566-8510, Japan

Official Distributor for North America

Iwai North America Inc.



Tel: 650-486-1541
orders@iwai-chem.com
www.iwaichem.com