

r-TE

Recombinant Trypsin/EDTA solution

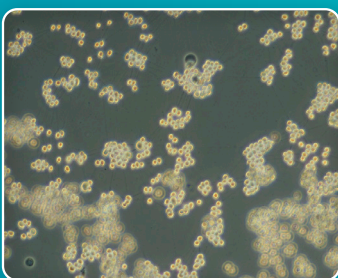
s-TI

Synthetic Trypsin Inhibitor solution



r-TE

- Free of animal components
- Cell dissociation of adherent cells
- High dissociation ability with good viability



s-TI

- Use equal amounts of s-TI to neutralize r-TE
- Free of animal components

r-TE Recombinant Trypsin/EDTA solution

s-TI Synthetic Trypsin Inhibitor solution

"r-TE" is ready to use recombinant Trypsin/EDTA solution. It can quickly dissociate cells. Use "s-TI", synthetic trypsin inhibitor to neutralize the reaction.

r-TE

- Ready to use recombinant Trypsin/EDTA solution. Free of animal components
- Optimal for dissociation of adherent cells.
- As efficient as animal origin trypsin.
- Validated by cell detachment tests.

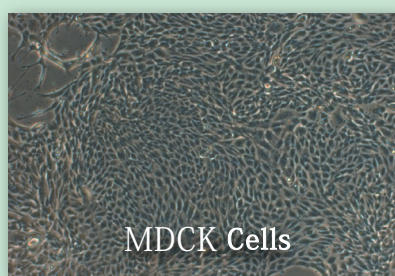
* The duration necessary to detach cells may vary by the type of cells and other factors. Use the minimum duration to avoid the damage to the cells by trypsin.



s-TI

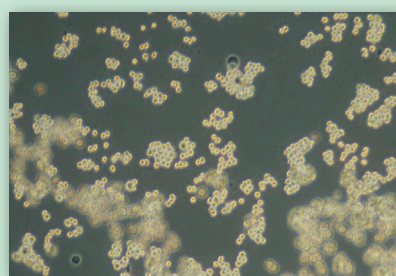
- Ready to use synthetic Trypsin Inhibitor solution
- Use equal amounts of s-TI to neutralize r-TE.
- Validated by cell detachment test.

Highly Effective Dissociation



MDCK Cells

Treated with
r-TE
(37°C 3-5 min.)
▶ ▶ ▶



Catalog# (CSTI / NIPRO)	Product Name	Description	Storage temp	Size
1210 / 87-974	r-TE	Recombinant Trypsin/EDTA solution	2-8 °C	100mL (P)
1220 / 87-975	s-TI	Synthetic Trypsin Inhibitor solution	2-8 °C	100mL (P)

(P) PET bottle

※This product is for research use only. It cannot be used for therapeutic or diagnostic purposes.



株式会社細胞科学研究所
宮城県仙台市青葉区西花苑1丁目16番16号
URL: <http://www.cstimedia.com>
E-mail: csti-info@ml.nipro.co.jp



ニプロ株式会社
大阪市北区本庄西3丁目9番3号

Official Distributor for North America
Iwai North America Inc.



Tel: 650-486-1541
orders@iwai-chem.com
www.iwaichem.com